

Teamworking on the Chessboard.

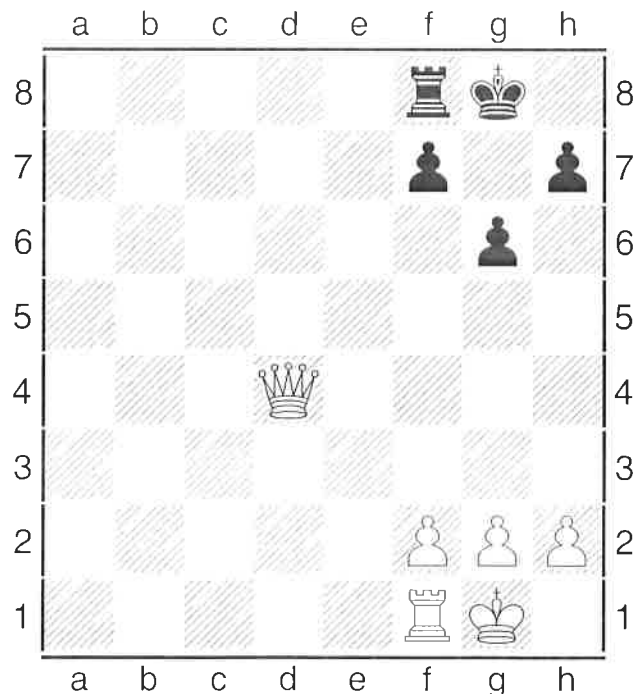
When you are playing chess, think of yourself as the coach of a team that is made up of your chess pieces.

For your team to work properly, the players, in this case your chess pieces, need to support one another during the game. As coach, you need to use the pieces available to you to best effect and ensure that they play well together. This means, in practice, that you need to ensure that the **pieces support one another on the board.**

Look at **Diagram 1** below. The queen would love to move to either the g7 or h8 squares to check the king.

The problem is that if the Queen moves to either of those squares, right beside the king, the queen will be captured by the king because she is not protected on either the g7 or g8 squares by one of her own pieces or pawns.

Diagram 1.



Now take a look at **Diagram 2** to see teamworking in action on the chessboard. Note that white now has a bishop on the b2 square on the same a1 – h8 diagonal that the queen is on. This means that the queen is protected by the bishop on b2, so **the queen can safely go to either the g7 or h8 square to checkmate the king ! (See Diagram 3).**

Diagram 2

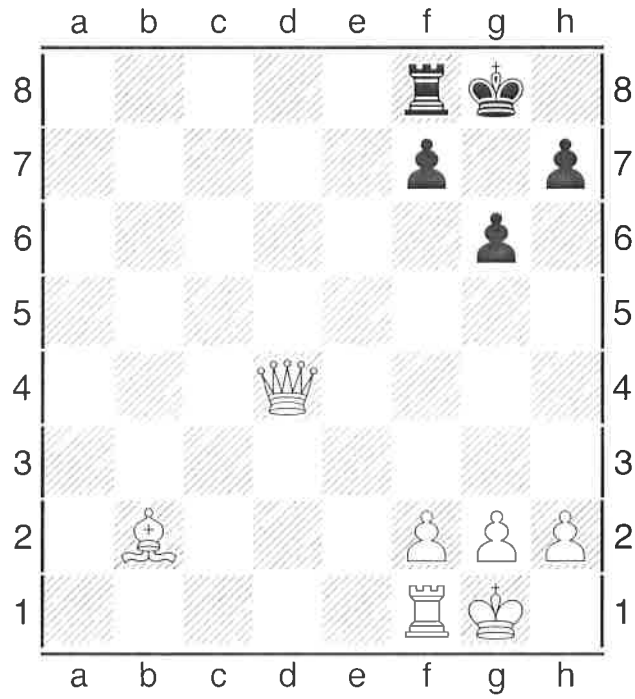
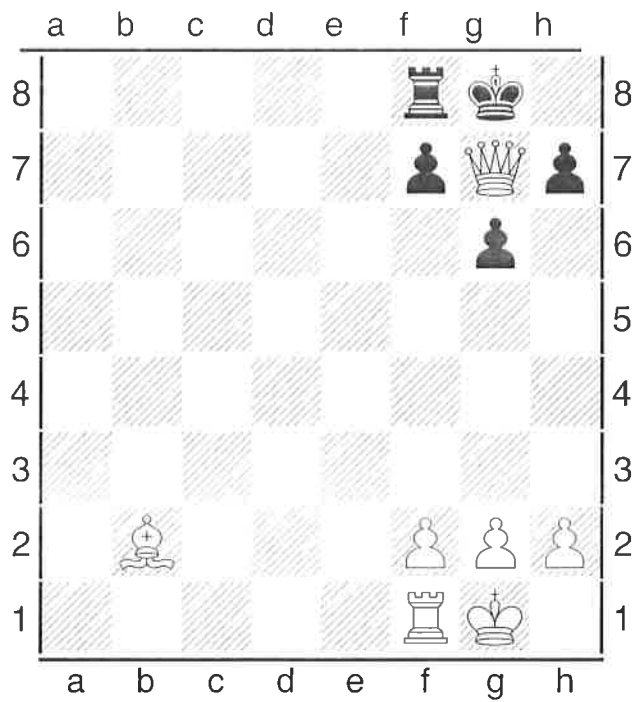
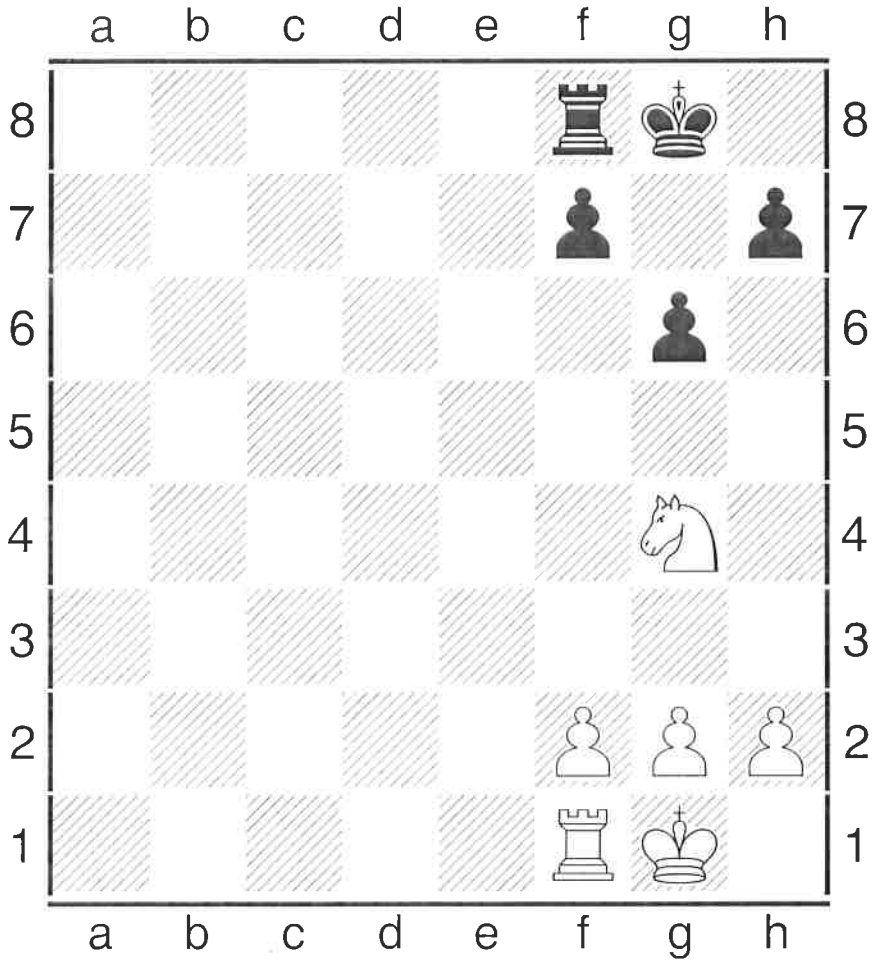


Diagram 3 – Final Position
Queen moves to g7 – checkmate!



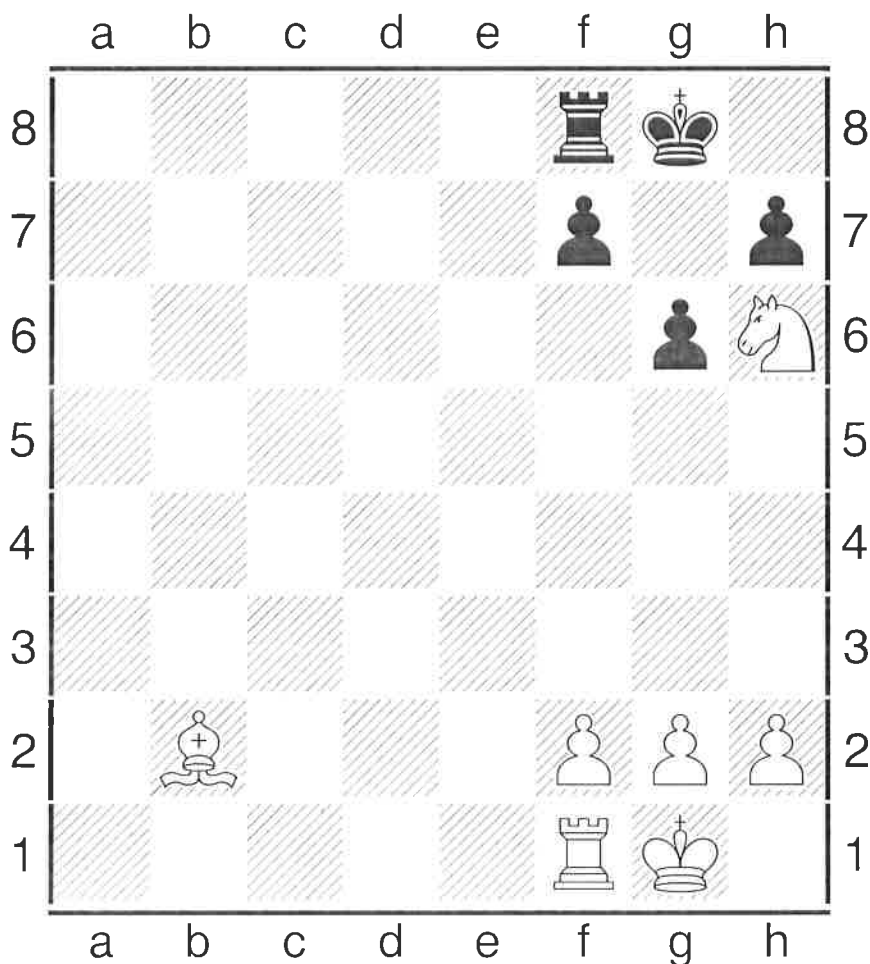
Now look at **Diagram 4** below. If white checks the king by moving the knight to either the f6 or h6 squares, the king can simply move out of check to the g7 or g8 squares. However, look what happens if white brings another piece into play by having a bishop on the b2 square (see Diagram 5)

Diagram 4



As you can see from **Diagram 5** when the knight moves to h6 to check the king, the result is checkmate! This is because the bishop on b2 controls the two escape squares of g7 and h8 that the king had in **Diagram 4** when the bishop was not on the Board.

Diagram 5



The above positions show the value of “teamwork” on the chessboard, that is using your pieces to support each other rather than just relying on one piece to do all the work !