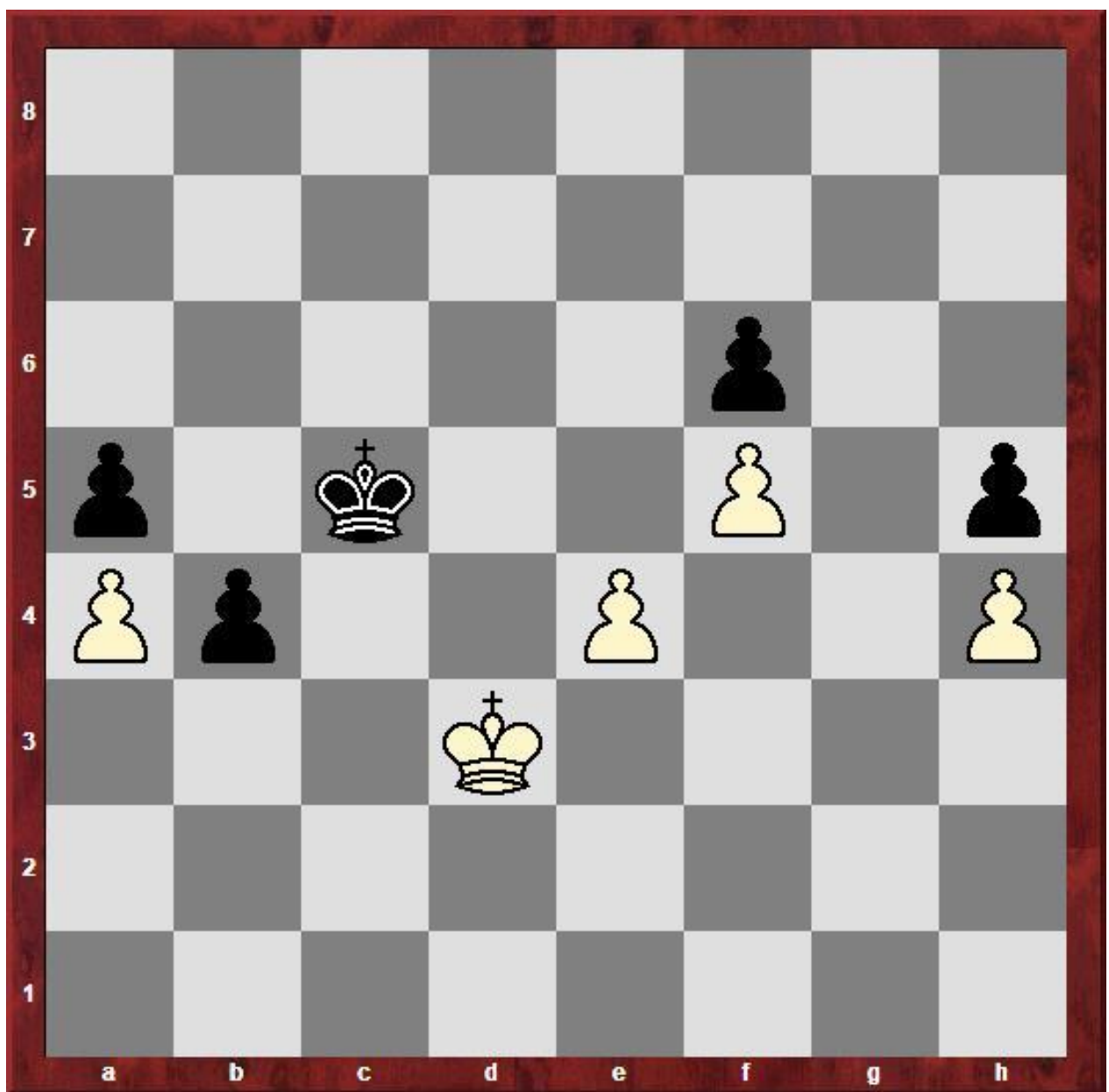
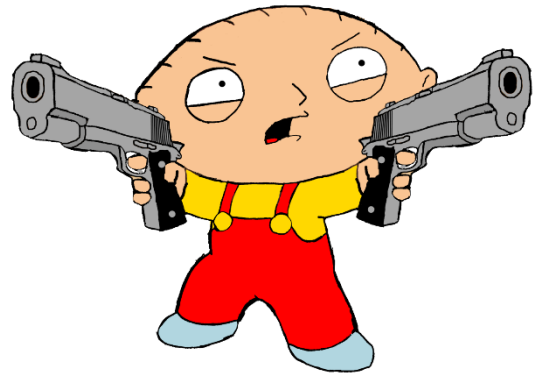


Tactical Puzzles

In the position below it is black to move. The player with the black pieces has a definite advantage - the passed pawn on b4 - but can this advantage be converted into a win?

Hint Black's aim is to reach the position on the board with white to move. In order to do this the black king needs to be manoeuvred very carefully.



In this position it is white to play.

While white can win a pawn by taking on a8 and then d4, can he do better?

