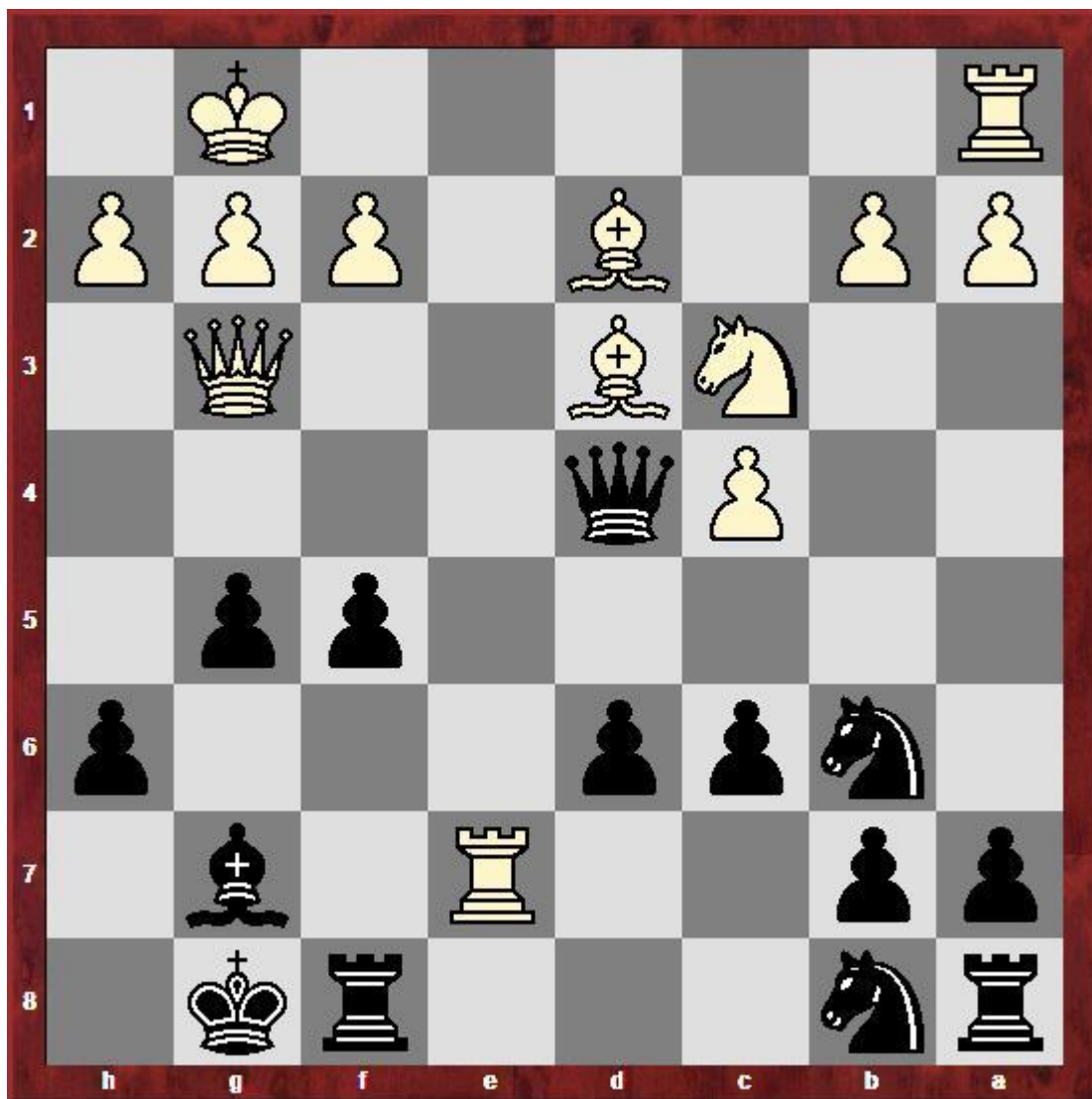


## Tactics from the Leinster Leagues

This position occurred in a recent Drogheda v Elm Mount league match (Heidenfeld Trophy).

Sean Cummins (Drogheda) White v Oliver Dunne (Elm Mount) Black.

It is White to play so what happened next??



Position after white plays Ne4

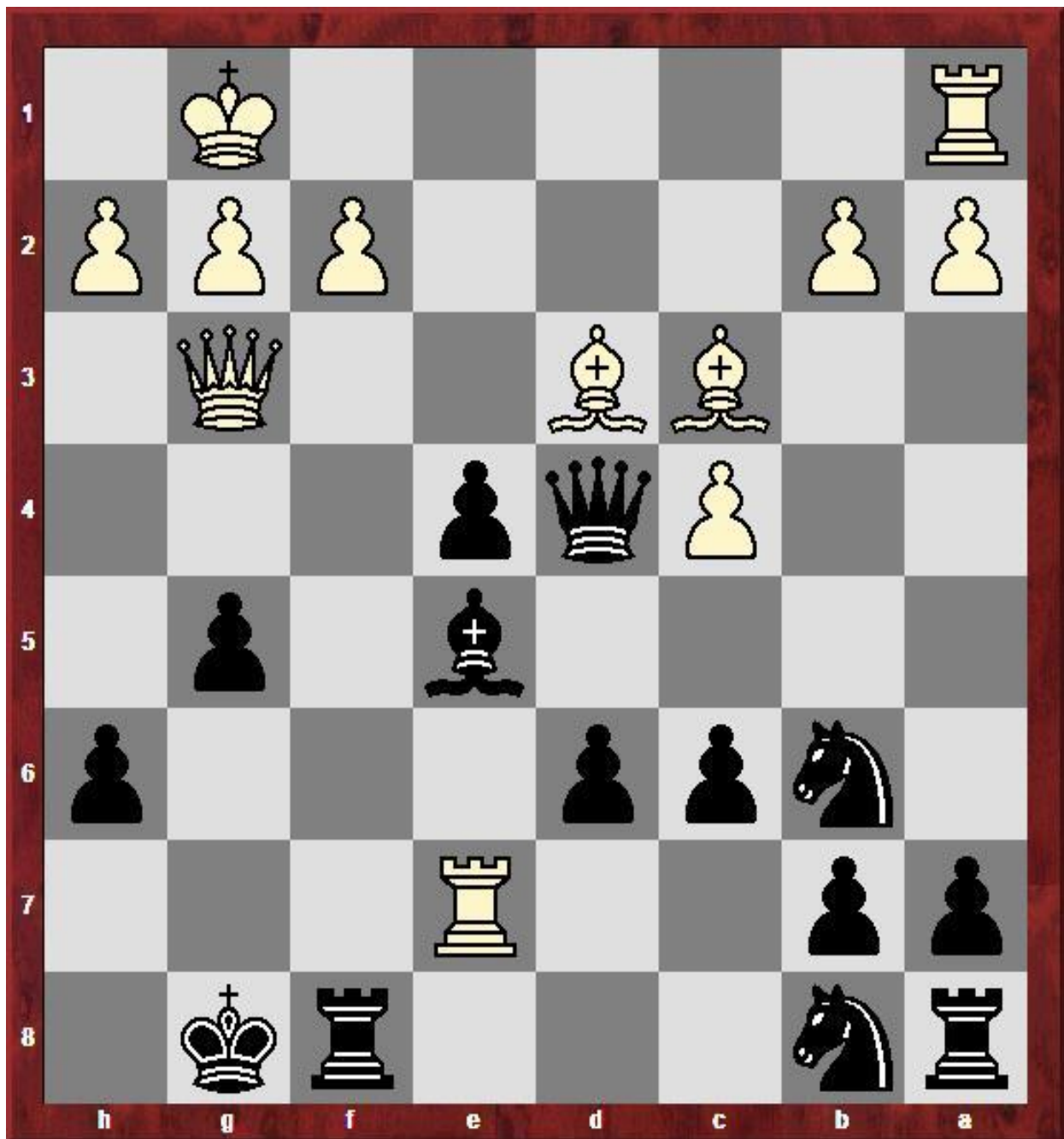


Position after black plays fxe4 and white plays Bc3



How does black respond to Bc3?

Black plays Be5 attacking the queen



Position below occurred after white captured the black queen on d4 and black responded by capturing the white queen by bxc3.

It is white to move now so how should he proceed?



Hint: the black king looks a bit vulnerable. Is there a way for white to take advantage?

Suppose white plays Rook to g7 attacking the king. The rook is protected by the bishop on d4 so the black king has to move to h8. What should white do next?

See below for a hint.

Hint: if white moves the rook, the black king will be attacked by the bishop. This is called a discovered check. Where should white move the rook?

White plays rook takes pawn on g5 giving a discovered check to the black king from the bishop on d4. Black can escape the check by moving the king to h7. What should white do now?

White's bishop on d3 captures the pawn on e4, giving check to the black king. The black king has no squares to move to – the white rook on g5 prevents him moving to the g-file and the white bishop on d4 prevents him moving to h8. The only move black has is Rook from f8 to f5 but white's bishop on e4 then captures the rook giving checkmate!