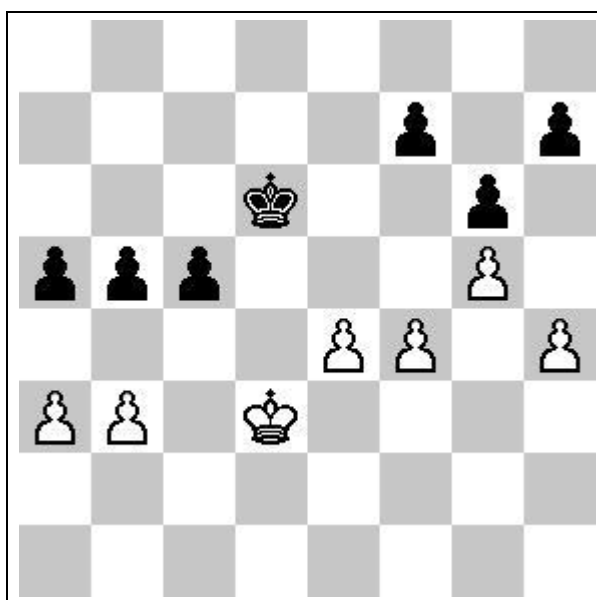


Leinster Championships 2003

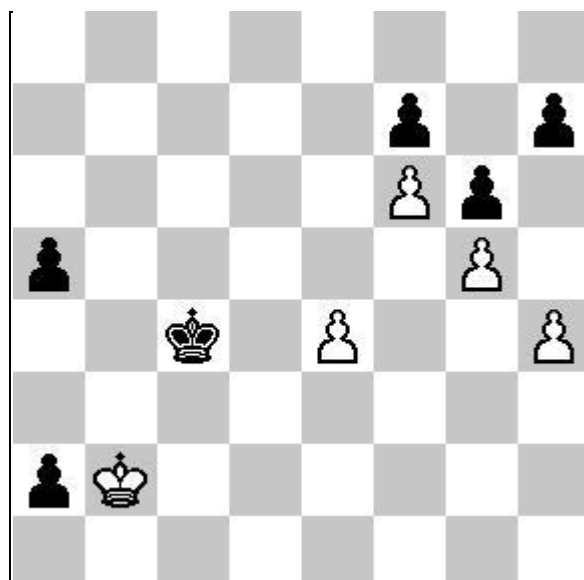
Hamid Konji (White) v Sean Loftus (Black)

The position below occurred in a game between my Elm Mount Club mate, Sean Loftus and Hamid Konji of the Phibsborough Chess Club. See what you can make of the position and suggest how you would proceed from both white and black's point of view before looking at the actual moves played.



In the above position, reached after 33 moves, it is white to play. Note that both sides have their kings and 6 pawns each. So who is winning in the above position or should it end up as a draw ?

Play continued as follows 34 a4,c4+, 35 bxc4, bxa4, 36 kc3,kc5, 37 f5, a3 38 f6, a2, 39 kb2,kxc4 and white resigns **(See final position below)**



Questions

Why is black winning in the above position?

Had White any better alternative moves from the starting position?

List the main features of the starting position. (hint look at the pawn structures, the position of the kings and try to find white's best initial move).

After white played a4 see if you can spot any better continuations for him than what he played in the game.

What are the key learning points from analysing the above position ?

List 4 ideas that occur to you in the table below.

1	
2	
3	
4	