

Chess Tactics - Creating Forks

In the following positions, you need to find some initial moves that help you create a fork.

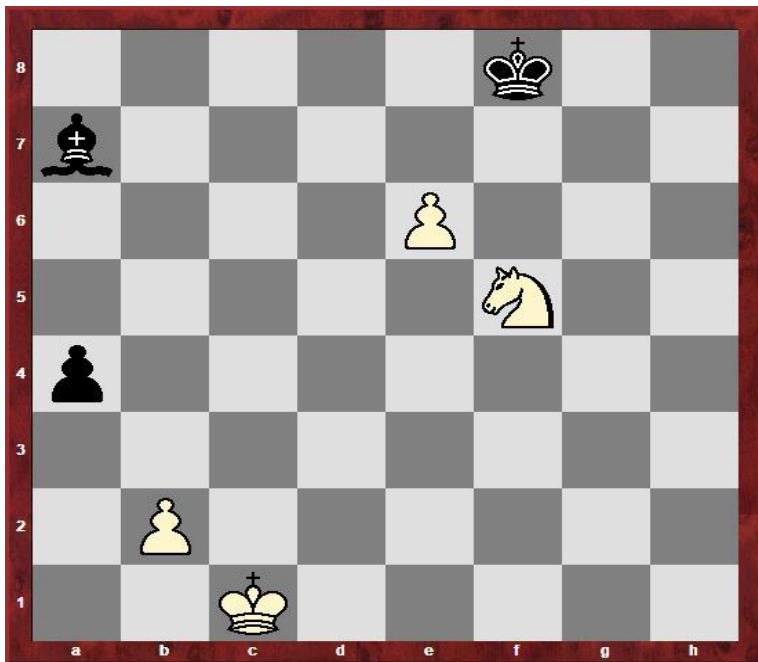
So look at each piece for the side that is due to move and see which one is most likely to be able to attack two opposing pieces;

Then see if you can figure out which opposing pieces might be attacked at the same time;
Finally see if you can spot a forcing move that helps create a fork.

White to Move



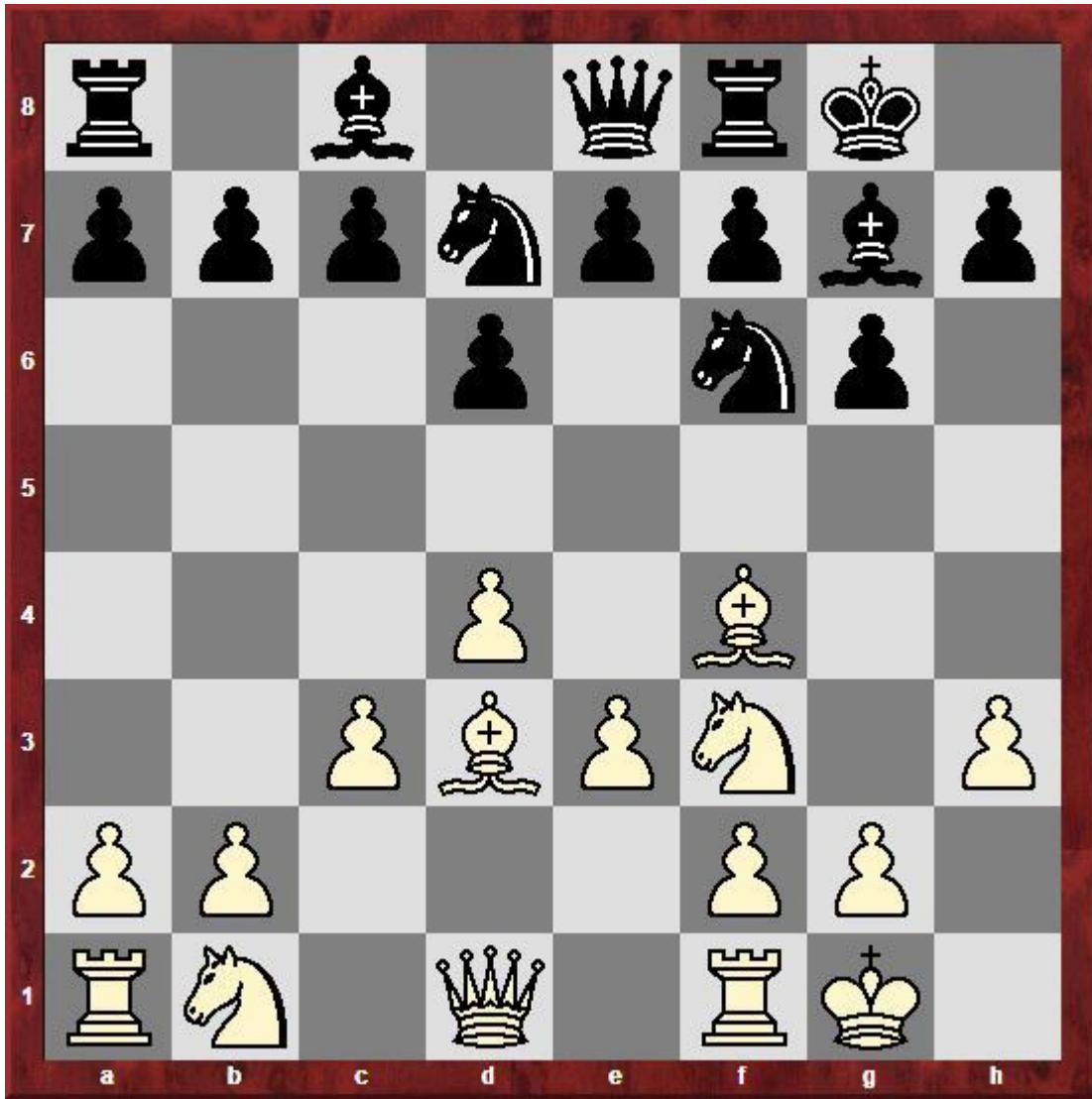
White to Play



White to Play



Black to play



Black to play



White to Play

